

Using BCM[®] Bus Converters in High Power Arrays

Paul Yeaman
 Director, VI Chip[®] Application Engineering



Contents	Page
Introduction	1
Theory	1
Symmetrical Input / Output Resistances	2
R_{OUT} Matching	3
Uniform Cooling	3
Arrays Powered From Multiple Inputs	3
Design Example	4
General Guidelines	6
Conclusion	6

Introduction

This application note provides methods and guidelines for designing BCM bus converters into high power arrays.

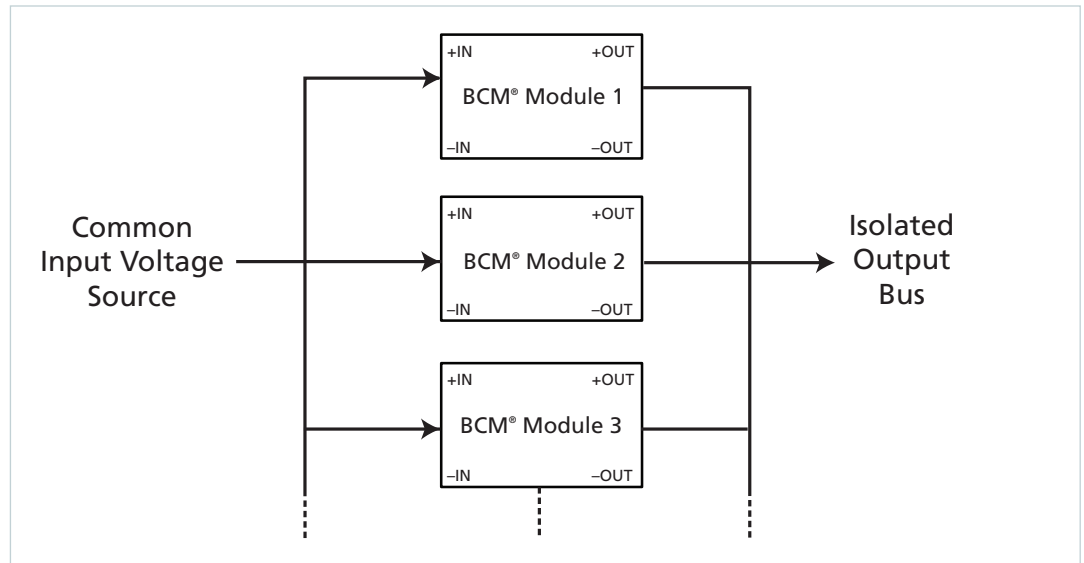
Theory

BCM modules current share when their respective inputs and outputs are connected in parallel. Sharing accuracy is a function of a) input and output interconnect impedance matching, b) the output impedances (R_{OUT}) of the BCM modules and c) uniform cooling.

In theory, a very large number of modules can be paralleled. In practice arrays larger than ten become difficult due to a) and c) above. Please contact Vicor Applications Engineering if you are designing an array with more than 10 modules.

Since bus converters are isolated transformers, their outputs may be paralleled with inputs powered from different sources. The lower the R_{OUT} of the module, the more closely input voltages must match to avoid excessive current imbalance. As such, the input voltages must be equal to ensure evenly-distributed sharing.

Figure 1
 BCM Parallel Array
 Block Diagram

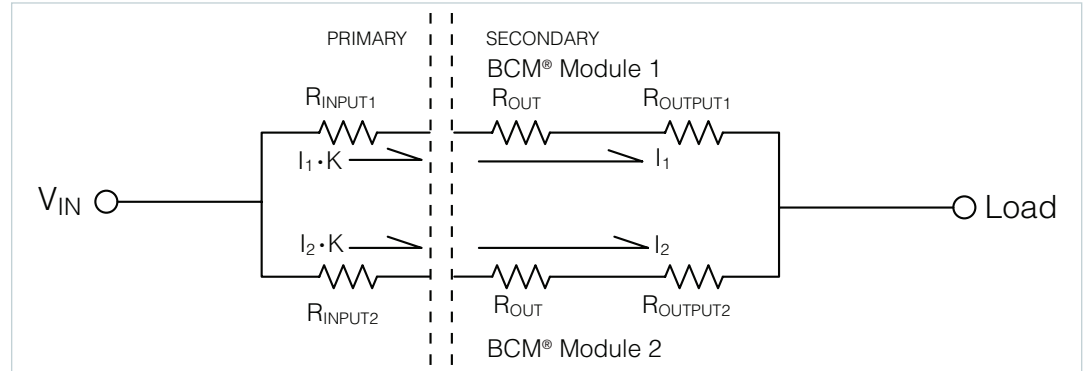


Symmetrical Input / Output Resistances

The primary design concern for a high power array is the layout of a symmetrical input and output feed. Figure 2 represents a simplified model of BCM® bus converter sharing for an array of two.

In this case, the circuit has been reduced to its core elements and each BCM module is represented as a resistor with resistance R_{OUT} . This model can easily be expanded to represent larger arrays.

Figure 2
Simplified Model of BCM
Module Sharing



If $R_{INPUT1} = R_{INPUT2}$ and $R_{OUTPUT1} = R_{OUTPUT2}$ then the current through both legs will be equal. An increase in $R_{OUTPUT1}$ will decrease I_1 proportionally. It is important to note, however, that an increase in R_{INPUT1} will decrease I_1 to the square of the K factor. For BCM modules having a small K factor ($\ll 1$) the matching of the input impedance is less critical. For example, assume the following:

$$K = 1/32$$

$$R_{OUT} = 10m\Omega$$

$$R_{OUTPUT1} = R_{OUTPUT2} = R_{INPUT1} = 0.$$

$$R_{INPUT2} = 1\Omega$$

$$\text{Solving for } \frac{I_1}{I_2} :$$

$$I_1 \cdot R_{OUT} + (I_1 \cdot K \cdot R_{INPUT1}) \cdot K = I_2 \cdot R_{OUT} + (I_2 \cdot K \cdot R_{INPUT2}) \cdot K$$

$$R_{INPUT1} = 0 \text{ so:}$$

$$I_1 \cdot R_{OUT} = I_2 \cdot R_{OUT} + I_2 \cdot K_2 \cdot R_{INPUT2}$$

Substituting values yields:

$$I_1 \cdot \frac{1}{100} = I_2 \cdot \left(\frac{1}{100} + \frac{1}{1024} \right)$$

$$\frac{I_1}{I_2} = \frac{11}{10}$$

This indicates that BCM Module 1 carries approximately 10% more current with a 1Ω impedance in series with the input of BCM Module 2 for $K = 1/32$. However, if K were equal to 1, then BCM Module 1 would carry essentially 100% of the current.

R_{OUT} Matching

R_{OUT} is specified as a range in the BCM® bus converter data sheet and has a positive temperature coefficient with the specified range that reinforces sharing. As the module temperature increases due to increased dissipation, the R_{OUT} increases. This decreases the amount of current flowing through that BCM module in an array, reducing the module power dissipation.

Uniform Cooling

Due to the positive temperature coefficient of R_{OUT}, BCM modules mounted close to each other and cooled equally will tend to equalize power dissipation.

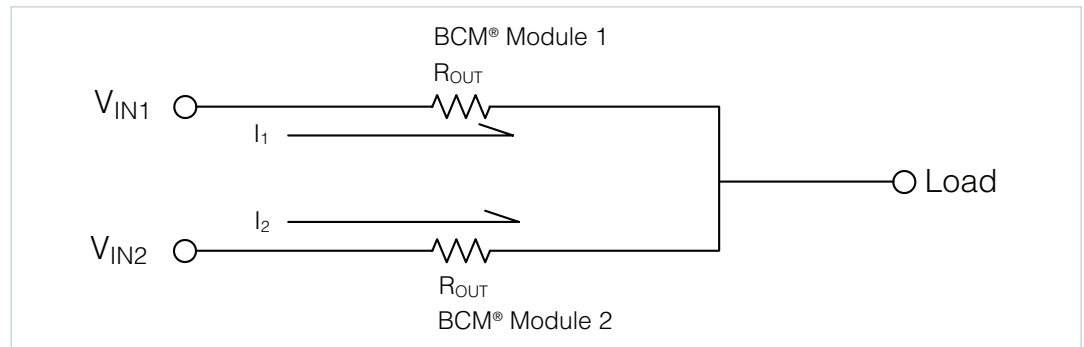
The true power limitation on the module is based on dissipation. Therefore, the module that has a lower R_{OUT} may have a higher current when connected in an array (thus a higher power), but given that its dissipation is the same as neighboring units in an array, it will have similar MTBF characteristics.

The power rating of an array of BCM modules is equal to the power rating of the individual module times the number of modules in an array. Even under the ideal circumstances, the current through each module will not be equal, so under full power conditions the current may not be perfectly balanced. However, assuming that the module array is cooled equally, and the input and output impedances are matched, a current imbalance is acceptable if the dissipation of this BCM module is the same as others in the array. It is important never to exceed the maximum rated DC current of the module under any circumstances.

Arrays Powered From Multiple Inputs

Figure 3 addresses an arrangement in which the BCM modules are powered from separate inputs.

Figure 3
Parallel Arrays from
Separate Inputs



In this example, input and output impedances are considered negligible. If V_{IN1} = V_{IN2} then the currents in both legs are equal. However assume the following:

$$V_{IN1} = 48V$$

$$V_{IN2} = 49V$$

$$R_{OUT} = 1m\Omega$$

$$K = 1/32$$

$$I_{LOAD} = 100A$$

The two BCM modules must satisfy the following equation:

$$V_{IN1} \cdot K - I_{OUT1} \cdot R_{OUT} = V_{IN2} \cdot K - I_{OUT2} \cdot R_{OUT}$$

Also,

$$I_{OUT1} + I_{OUT2} = 100A$$

Solving the simultaneous equations for I_{OUT1} and I_{OUT2} yields:

$$I_{OUT1} = 35A$$

$$I_{OUT2} = 65A$$

The same technique can be extended to include arrays with a larger number of BCM modules.

If $V_{IN1} - V_{IN2} > I_{OUT1} \cdot R_{OUT}$, then BCM® Module 1 will attempt to backfeed current through BCM Module 2 to increase V_{IN2} . To prevent reverse current in this situation, diodes can be added in series with +IN of each BCM module.

Design Example

Figure 4 shows an example array of seven high-voltage input 300W BCM bus converters to provide a total power of 2.1kW. Table 1 illustrates the measured currents for the laboratory layout shown in Figure 5. Even with less than ideal layout conditions (long wires, separate boards, use of standoffs to carry current), the overall sharing of the array is within 5%.

BCM modules switch at >1MHz and have an effective output ripple of two times the switching frequency, so output filtering is provided using a small point-of-load capacitor in conjunction with trace inductance. The use of the input inductors confines the high-frequency ripple current of each module. Some input inductance between the modules inputs is necessary to minimize interactions between parallel connected modules and allow for proper operation for the array. Input inductance also reduces EMI and promotes the overall stability of the system by reducing (or eliminating) beat frequencies caused by the asynchronous switching of the BCM modules.

Connecting the PC pins of the BCM modules in the array allows all units in the array to be enabled and disabled simultaneously. Simultaneous startup is required in cases where the array will start up into more current than one BCM module is sized to handle.

Figure 4
 BCM® Bus Converter Array
 Using Seven Modules

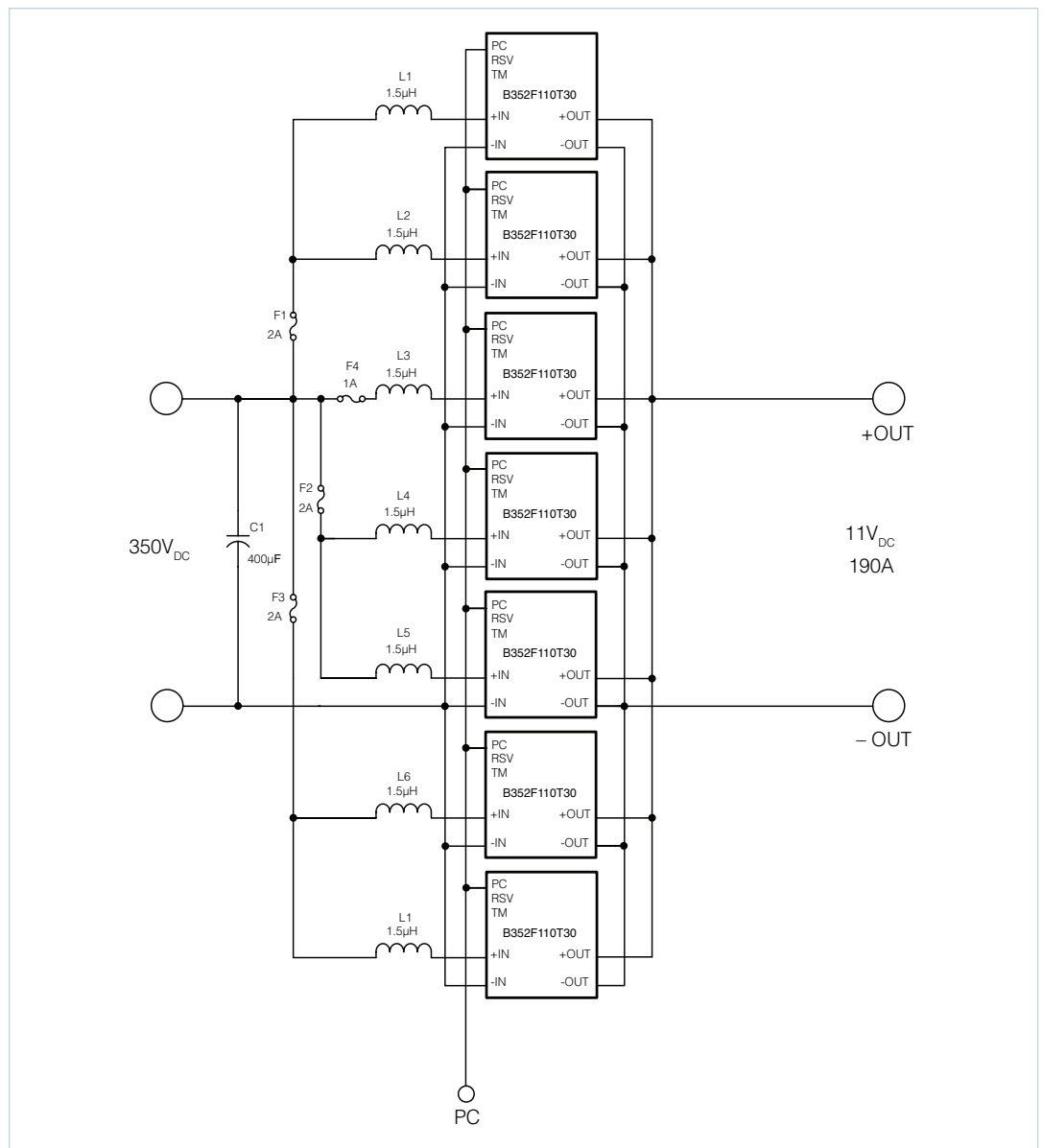
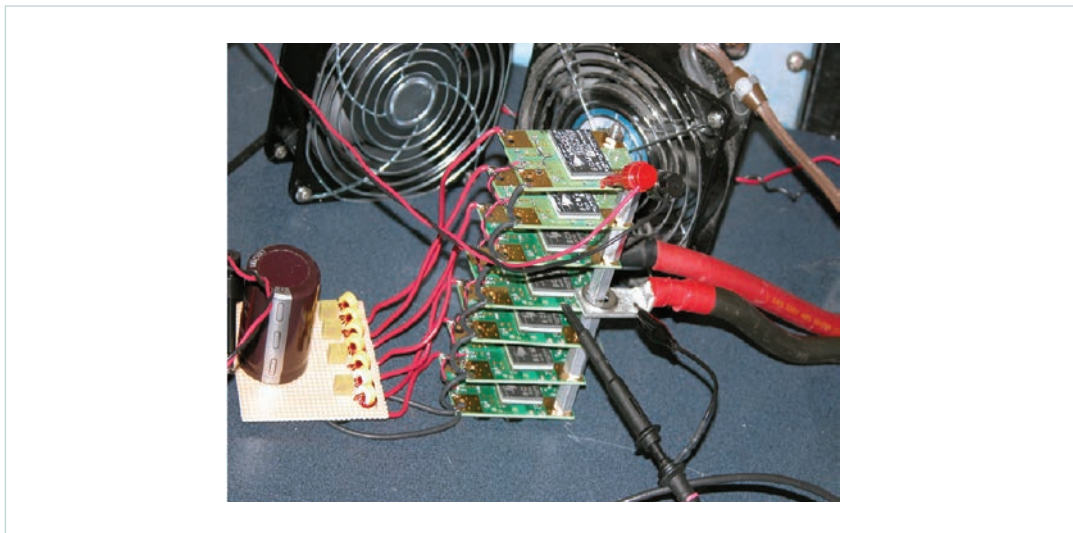


Table 1
 Seven BCM Bus Converter Array
 Current Sharing

Module #	48A Load (6.86A / BCM)			95A Load (13.6A / BCM)			143A Load (20.4A / BCM)			192A Load (27.5A / BCM)		
	I _{BCM}	% Deviation		I _{BCM}	% Deviation		I _{BCM}	% Deviation		I _{BCM}	% Deviation	
U1	5.9	14.0	3.4	12.6	7.4	2.9	19.2	5.9	2.5	27.6	0.4	0.7
U2	7.1	2.4	7.9	13.2	0.0	5.9	19.9	1.0	4.4	27.3	0.7	0.4
U3	6.7	3.4	5.0	13.6	2.9	2.9	20.6	2.0	2.5	27.7	0.0	0.7
U4	7.4	0.9		14.4	0.7		21.3	0.0		27.4	1.1	
U5	7.1			14.0			20.8			27.5		
U6	7.2			14.0			20.9			27.7		
U7	6.8			13.5			20.4			27.2		
Worst-Case deviation from nominal (%)		14.0			7.4			5.9			1.1	

Figure 5
*Laboratory Demonstration
of the Seven BCM
Bus Converter Array*



General Guidelines

1. Always ensure that the BCM[®] bus converters are fused according to safety agency requirements.
2. PC pins of BCM modules should be connected together to enable and disable the modules simultaneously.
3. All signal and power traces should be laid out on the PCB to minimize noise coupling and impedance. For more details on PCB layout guidelines, please see [AN:005](#).
4. An inductor should be placed in series with the +IN of each BCM bus converter in the array to minimize high frequency circulating currents in the primary as well as beat frequencies caused by asynchronous switching.
5. BCM modules fed from different sources with outputs in parallel must have appropriately matched inputs as the input voltage matching plays a critical role in current sharing.
6. In large arrays, routing issues may cause mismatching input and output impedances to each BCM module. In that case, varying trace widths should be used to equalize impedances between close and distant modules.
7. In large arrays, it may be difficult to match cooling for each BCM module in the array. In that case, heat sink design or airflow routing should be adjusted to equalize module cooling as much as possible. To optimize reliability, overall temperature should be as low as possible.
8. Load capacitors should be placed near the load. Refer to the BCM datasheet for the maximum output capacitor value in an array. In cases where the load bypassing capacitance must be placed near the BCMs, they should be created with individual capacitors distributed across each BCM output, rather than lumped on a single BCM output.

Conclusion

High power arrays can be created using the bus converters in parallel provided that care is taken in designing the input and output connections. BCM modules share inherently with inputs and outputs connected in parallel, with the positive temperature coefficient of R_{OUT} reinforcing sharing. Assuming equal cooling, an array can operate at full power with accurate sharing and no derating. The array should be designed based on guidelines that optimize protection, efficiency, reliability, and minimize noise.

Limitation of Warranties

Information in this document is believed to be accurate and reliable. HOWEVER, THIS INFORMATION IS PROVIDED "AS IS" AND WITHOUT ANY WARRANTIES, EXPRESSED OR IMPLIED, AS TO THE ACCURACY OR COMPLETENESS OF SUCH INFORMATION. VICOR SHALL HAVE NO LIABILITY FOR THE CONSEQUENCES OF USE OF SUCH INFORMATION. IN NO EVENT SHALL VICOR BE LIABLE FOR ANY INDIRECT, INCIDENTAL, PUNITIVE, SPECIAL OR CONSEQUENTIAL DAMAGES (INCLUDING, WITHOUT LIMITATION, LOST PROFITS OR SAVINGS, BUSINESS INTERRUPTION, COSTS RELATED TO THE REMOVAL OR REPLACEMENT OF ANY PRODUCTS OR REWORK CHARGES).

Vicor reserves the right to make changes to information published in this document, at any time and without notice. You should verify that this document and information is current. This document supersedes and replaces all prior versions of this publication.

All guidance and content herein are for illustrative purposes only. Vicor makes no representation or warranty that the products and/or services described herein will be suitable for the specified use without further testing or modification. You are responsible for the design and operation of your applications and products using Vicor products, and Vicor accepts no liability for any assistance with applications or customer product design. It is your sole responsibility to determine whether the Vicor product is suitable and fit for your applications and products, and to implement adequate design, testing and operating safeguards for your planned application(s) and use(s).

VICOR PRODUCTS ARE NOT DESIGNED, AUTHORIZED OR WARRANTED FOR USE IN LIFE SUPPORT, LIFE-CRITICAL OR SAFETY-CRITICAL SYSTEMS OR EQUIPMENT. VICOR PRODUCTS ARE NOT CERTIFIED TO MEET ISO 13485 FOR USE IN MEDICAL EQUIPMENT NOR ISO/TS16949 FOR USE IN AUTOMOTIVE APPLICATIONS OR OTHER SIMILAR MEDICAL AND AUTOMOTIVE STANDARDS. VICOR DISCLAIMS ANY AND ALL LIABILITY FOR INCLUSION AND/OR USE OF VICOR PRODUCTS IN SUCH EQUIPMENT OR APPLICATIONS AND THEREFORE SUCH INCLUSION AND/OR USE IS AT YOUR OWN RISK.

Terms of Sale

The purchase and sale of Vicor products is subject to the Vicor Corporation Terms and Conditions of Sale which are available at: (<http://www.vicorpower.com/termsconditionswarranty>)

Export Control

This document as well as the item(s) described herein may be subject to export control regulations. Export may require a prior authorization from U.S. export authorities.

Contact Us: <http://www.vicorpower.com/contact-us>

Vicor Corporation

25 Frontage Road
Andover, MA, USA 01810
Tel: 800-735-6200
Fax: 978-475-6715
www.vicorpower.com

email

Customer Service: custserv@vicorpower.com
Technical Support: apps@vicorpower.com